



# ASHAPURA STEEL

[AN ISO : 9001:2008 CERTIFIED COMPANY]



Your Complete Piping Solution

SEAMLESS & ERW STEEL PIPES  
STAINLESS STEEL  
DUPLEX STAINLESS STEEL  
CARBON & ALLOY STEEL  
HIGH NICKEL ALLOY  
COPPER ALLOY





# ASHAPURA STEEL

[AN ISO : 9001 : 2008 CERTIFIED COMPANY]



**WE HELP TO BUILD SUCCESSFUL BUSINESS**

## *Company Profile*

ASHAPURA STEEL is a global leader in the Steel industry since last 20 years, specialized in stockist and exporter of Stainless Steel, Carbon Steel, Alloy Steel Raw Material, Non-Ferrous Metals and industrial raw materials for various sectors and discerning customers in India & abroad.

As markets today demand better performance, more reliability & higher quality. We have expanded to new areas on the map globally, offering a larger range of products & services than ever before.

ASHAPURA STEEL is a professionally managed organization having extensive experience in the field of manufacturing of Fabricated Pipes, Pipe Fittings, Flanges as well as an unparalleled sourcing network for varied steel products.

Our operational style has been the key to our success as we acknowledge responsibility to the specific need of every customer. Every member from management, managers to workers each one is encouraged to achieve highest performance in quality & service resulting in Total Customer Satisfaction.

As a testimony to our relentless efforts in satisfying the clients need, we have been retained by various clients across different industries.

## *Quality Policy*

ASHAPURA STEEL the name itself stands for superior quality and service.

Attain product leadership through state of art processing facilities and practices

Increase business share in the market with a focus on specific sectors

Create new market by promoting special finishes in Steel

Continuously reach out to new customers

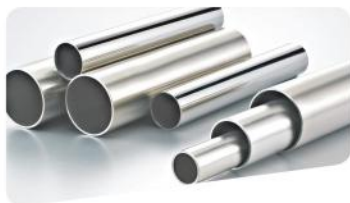
Timely delivery of products as per Customers Quality requirements

Comply with all applicable Statutory / Regulatory requirements

The group is determined to improve productivity and focus continuously on innovation and upgradation of its products and people.

## *Certificate*





### STAINLESS STEEL PIPES & TUBES

Size	: ½" to 30"
Schedule	: Sch. 5 to Sch. XXS
Stainless Steel	: ASTM A312, A213, A269, A358 - TP 304/304H/304L/316/316H/316L/316Ti/309/310/ 317/317L/321/347/S446
Types	: SEAMLESS / WELDED

### DUPLEX STEEL PIPES

Size	: ½" to 30"
Schedule	: Sch. 5 to Sch. XXS
Duplex Steel	: ASTM A790 - UNS S31803, S32750, S32760, S32205
Super Duplex	: 2507, ZERON-100, UNS-S32750, UNS-S32750, UNS-S32550, UNS-S39274
Types	: SEAMLESS / WELDED



### HIGH NICKEL ALLOYS

Size	: ½" NB to 10" NB
Standard	: 10S/40S/80S
Nickel	: UNS N02200, N02201
Monel	: UNS N04400, N05500, Alloy 20, Alloy 904L, SMO254, 253MA
Inconel	: UNS N06600, N06601, N06625, N08800, N08810, N08825, 718
Hastelloy	: UNS N10276, N06022, B3
Form	: Tubes, Pipes, Sheets, Plates, Round Bar, Flanges
Types	: Seamless, ERW

### COPPER ALLOYS

Size	: ½" NB to 10" NB
Standard	: 10S/40S/80S
Cupro Nickel	: C70600 (90:10), C71500 (70:30), C71640
Copper	: DHP, DLP, OFHC, DOW, Tellurium Copper
Brass	: 63/37, 70/30, Admiralty Brass Tubes
Shapes	: Round, Oval, Square, Rectangle
Form	: Tubes, Pipes, Strips, Coils
Types	: Seamless, ERW



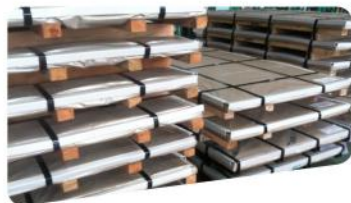


## ALLOY STEEL PIPES & TUBES

Size	: 1/2" to 36"
Schedule	: Sch. 5 to Sch. XXS
Alloy Steel Pipe	: ASTM A335 Gr. P5, P9, P11, P12, P22 & P91 ASTM A 213 - T-11, T-12, T-22, T-5, T-9, T91 ASTM A671 Gr. C60, C70, Class 12 ASTM A672 Gr. CC65, Class 22 ASTM A691 Gr. CC70, Class 11
Types	: Seamless, ERW, EFW, LSAW, SSAW, DSAW

## CARBON STEEL PIPES & TUBES

Size	: 1/2" to 60"
Schedule	: Sch. 5 to Sch. XXS
Carbon Steel	: ASTM A 106 Gr. B ASTM A53 BS 3059 Gr. 360 / 440, SA 179, DIN 17175, SA / ASTM A210 Gr. A1
Low Temp. Pipe	: ASTM A 333 Gr. 6, ASTM A 671 / A672 / A691
Line Pipe	: API 5L, X 42, 46, 52, 56, 60, 70, PSL1, PSL2
Mild Steel	: IS 1239, IS 3589 Gr. Fe330, Fe410
Types	: Seamless, ERW, EFW, LSAW, SSAW, DSAW



## SHEET & PLATES

<b>Stainless Steel</b>	: ASTM A 240 Gr. TP 304, 304L, 304LN, 310S, 316L, 316LN, 316Ti, 317L, 321, 347H, , 430 etc.
<b>High Nickel Alloy</b>	: Monel, Cupro-Nickel, Inconel, Hastalloy, Alloy 20, Alloy904L
<b>Non Ferrous</b>	: Copper, Brass, Bronze, Aluminium, etc.
<b>Duplex</b>	: UNS S31803, UNS S32750, UNS S32760



## FLANGES

<b>Stainless Steel</b>	: ASTM A182 F304/304L/304H/316/316L/317/317L/321/310/347
<b>Duplex Steel</b>	: UNS S31803, UNS S32750, UNS S32760,
<b>High Nickel</b>	: 904L, Alloy 20 Monel, Cupro-Nickel, Inconel, Hastalloy
<b>Types</b>	: Weldneck, Slipon, Blind, Socket Weld, Lap Joint, Spectacles, Weldneck, RTJ, Flange
<b>Size</b>	: 1/2" NB TO 24" NB.
<b>Class</b>	: 150#, 300#, 400#, 600#, 900#, 1500# & 2500#.

We undertake special Flanges as per Customer Drawing & Sketches.



## STAINLESS STEEL PIPE DIMENSION & WEIGHT-KG. PER MTR. (ANSI B36.19)

Nominal Bore mm	INCH	Outside Diameter mm	Schedule 5S		Schedule 10S		Schedule 40S		Schedule 80S		Schedule 160S		Schedule XXS	
			Wt mm	Weight (Kg/m)	Wt mm	Weight (Kg/m)	Wt mm	Weight (Kg/m)	Wt mm	Weight (Kg/m)	Wt mm	Weight (Kg/m)	Wt mm	Weight (Kg/m)
3	1/8	10.3	1.24	0.276	1.24	0.28	1.73	0.37	2.41	0.47	-	-	-	-
6	1/4	13.7	1.24	0.390	1.65	0.49	2.24	0.631	3.02	0.80	-	-	-	-
10	3/8	17.1	1.24	0.490	1.65	0.63	2.31	0.845	3.20	1.10	-	-	-	-
15	1/2	21.3	1.65	0.800	2.11	1.00	2.77	1.27	3.75	1.62	4.75	1.94	7.47	2.55
20	3/4	26.7	1.65	1.03	2.11	1.28	2.87	1.68	3.91	2.20	5.54	2.89	7.82	3.63
25	1	33.4	1.65	1.30	2.77	2.09	3.38	2.50	4.55	3.24	6.35	4.24	9.09	5.45
32	1 1/4	42.2	1.65	1.65	2.77	2.70	3.56	3.38	4.85	4.47	6.35	5.61	9.70	7.77
40	1 1/2	48.3	1.65	1.91	2.77	3.11	3.68	4.05	5.08	5.41	7.14	7.25	10.16	9.54
50	2	60.3	1.65	2.40	2.77	3.93	3.91	5.44	5.54	7.48	8.74	11.1	11.07	13.44
65	2 1/2	73.0	2.11	3.69	3.05	5.26	5.16	8.63	7.01	11.4	9.53	14.9	14.2	20.39
80	3	88.9	2.11	4.51	3.05	6.45	5.49	11.30	7.62	15.2	11.1	21.3	15.24	27.65
100	4	114.3	2.11	5.84	3.05	8.36	6.02	16.07	8.56	22.3	13.49	33.54	17.12	41.03
125	5	141.3	2.77	9.47	3.40	11.57	6.55	21.8	9.53	31.97	15.88	49.11	19.05	57.43
150	6	168.3	2.77	11.32	3.40	13.84	7.11	28.3	10.97	42.7	18.2	67.56	21.95	79.22
200	8	219.1	2.77	14.79	3.76	19.96	8.18	42.6	12.07	64.6	23.0	111.2	22.23	107.8
250	10	273.1	3.40	22.63	4.19	27.78	9.27	60.5	15.08	96.0	28.6	172.4	25.40	155.15
300	12	323.9	3.96	31.25	4.57	36.00	9.52	73.88	17.45	132.0	33.32	238.76	25.40	186.97
350	14	355.6	3.96	34.36	4.78	41.3	11.13	94.59	19.05	158.08	35.71	281.70	-	-
400	16	406.4	4.19	41.56	4.78	47.29	12.7	123.30	21.41	203.33	40.46	365.11	-	-
450	18	457.2	4.19	46.80	4.78	53.42	14.27	155.80	23.8	254.36	45.71	466.40	-	-
500	20	508.0	4.78	59.25	5.54	68.71	15.09	183.42	26.19	311.2	49.99	564.68	-	-
600	24	609.6	5.54	82.47	6.35	94.45	17.48	255.41	30.96	442.08	59.54	808.22	-	-

## CARBON & ALLOY STEEL SEAMLESS PIPE DIMENSION & WEIGHT - KG. PER MTR. (ANSI B 36.10)

Nominal Pipe size mm	O/D inch	Schedule 10 mm	Schedule 20 mm	Schedule 30 mm	Schedule STD		Schedule 40		Schedule 60		Schedule Extra Strong (XS)		Schedule 100		Schedule 120		Schedule 140		Schedule 160		Schedule Double Extra Strong (XXS)							
					wt	wt	wt	wt	wt	wt	wt	wt	wt	wt	wt	wt	wt	wt	wt	wt	wt	wt	wt	wt	wt			
3	1/8	10.3			1.73	0.37	1.73	0.37			2.41	0.47	2.41	0.47														
6	1/4	13.7			2.24	0.63	2.24	0.63			3.02	0.80	3.02	0.80														
10	3/8	17.1			2.31	0.84	2.31	0.84			3.20	1.10	3.20	1.10														
15	1/2	21.3			2.77	1.27	2.77	1.27			3.73	1.62	3.73	1.62														
20	3/4	26.7			2.87	1.69	2.87	1.69			3.91	2.20	3.91	2.20														
25	1	33.4			3.38	2.50	3.38	2.50			4.55	3.24	4.55	3.24														
32	1 1/4	42.2			3.56	3.39	3.56	3.39			4.85	4.47	4.85	4.47														
40	1 1/2	48.3			3.68	4.05	3.68	4.05			5.08	5.41	5.08	5.41														
50	2	60.3			3.91	5.44	3.91	5.44			5.54	7.48	5.54	7.48														
65	2 1/2	73.0			5.16	8.63	5.16	8.63			7.01	11.41	7.01	11.41														
80	3	88.9			5.49	11.3	5.49	11.3			7.62	15.27	7.62	15.3														
90	3 1/2	101.6			5.74	13.57	5.74	13.57			8.08	18.63	8.08	18.63														
100	4	114.3			6.02	16.07	6.02	16.07			8.56	22.3	8.56	22.3			11.3	28.32										
125	5	141.3			6.55	21.77	6.55	21.77			9.53	30.9	9.53	30.9														
150	6	168.3			7.11	28.26	7.11	28.26			10.97	42.5	10.97	42.5														
200	8	219.1		6.35	33.3	7.0	36.8	8.18	42.5	8.18	42.55	10.31	53.10	12.7	64.8	12.7	64.5	15.1	75.82	18.3	90.4	20.6	100.9	23.0	111.27	22.23	108.0	
250	10	273.0		6.35	41.7	7.8	51.3	9.27	60.31	9.27	60.31	12.70	81.50	12.7	81.5	15.1	96.0	16.3	114.7	21.44	133.0	25.4	155	26.6	172.3	25.4	155.0	
300	12	323.9		6.35	49.7	8.4	65.2	9.53	73.8	10.31	79.73	14.30	109.0	12.7	97.4	15.0	132.0	21.4	160.0	25.4	187.0	28.6	208	33.3	238.7	25.4	187.0	
350	14	355.6	6.35	54.6	7.92	67.9	9.53	81.3	9.53	81.3	11.13	94.55	15.10	126.4	12.7	107.4	15.0	158.0	23.8	195.0	27.8	224.0	31.8	253.5	35.7	281.7		
400	16	406.4	6.35	62.6	7.92	77.9	9.53	90.3	9.53	90.3	12.7	123.3	18.70	180.0	12.7	123.3	21.44	203.5	26.2	245.5	30.9	266.6	36.53	33.0	40.5	365.4		
450	18	457.0	6.35	70.5	7.92	87.7	11.13	122.4	9.53	105.2	14.27	156.0	19.05	206.0	12.7	139.0	23.8	254.6	29.35	309.6	34.9	363.6	39.7	408.3	45.2	459.4		
500	20	508.0	6.35	78.5	9.53	117.2	12.7	155.1	9.53	117.2	15.09	183.4	20.62	248.5	12.7	155.1	26.2	311.2	32.94	381.5	38.1	441.5	44.4	506	50.0	564.8		
550	22	559.0	6.35	86.5	9.53	129.0	12.7	171.0	9.53	129.0		22.26	294.0	12.7	171.0	26.8	373.8	34.9	451.4	41.3	527.0	47.6	600	54.0	672.0			
600	24	609.6	6.35	94.5	9.53	141.0	14.3	209.7	9.53	141.0	17.48	255.4	24.61	355.0	12.7	187.0	30.96	442.08	38.89	547.7	46.0	640.0	52.4	720.15	59.5	808.22		
650	26	660.0	7.92	127.0	12.7	203.0			9.53	153.0					12.7	202.7												
700	28	711.0	7.92	137.4	12.7	218.7	15.88	271.2	9.53	165.0					12.7	214.7												
750	30	762.0	7.92	147.3	12.7	234.6	15.88	292.8	9.53	178.8					12.7	224.7												
800	32	813.0	7.92	157.0	12.7	250.6	15.88	312.0	9.53	188.2	17.48	342.9			12.7	236.6												
850	34	864.0	7.92	167.0	12.7	266.6	15.88	332.1	9.53	200.3	17.48	364.9			12.7	250.6												
900	36	914.4	7.92	176.9	12.7	282.3	15.88	351.7	9.53	212.5	19.05	420.4			12.7	282.2												

## APPLICATION



# ASHAPURA STEEL

[AN ISO : 9001:2008 CERTIFIED COMPANY]



- Engineering  
Petro-Chemical
- Cement Industries
- Nuclear Power



- Chemical &  
Pharmaceutical
- Food Industries
- Railway



- Ship Building
- Paper & Pulp Industries
- Sugar Industry
- Water Piping System



- Oil & Gas Industries
- Textile Industries
- Automobile Industries

## VALUE ADDED SERVICES

- Coating
- Cutting
- Centreless Grinding (Cg)
- Draw & Expansion
- Drilling
- Hydraulic Press
- Hardness Tester
- Electroplating
- Heat Treatment (Hardening & Tempering)
- Machining (CNC)
- Polish (Electro & Commercial)
- Slitting
- Chemical Laboratory
- Lathe Machines



# ASHAPURA STEEL

[AN ISO : 9001:2008 CERTIFIED COMPANY]

**Exporter, Importer & Stockiest of :**

High Nickel Alloys, Stainless Steel, Carbon & Alloy Steel, Duplex Steel & Copper Alloy

**Address :** 114/A, R. K. Wadi Shop No. 8, 2nd Parsiwada Lane, Mumbai - 400 004, India

**Tel.:** +91 22 6639 4870 / 6639 4492 **Mob.:** +91 9320006141

**Email :** sales@ashapurasteel.com / info@ashapurasteel.com / sales@ashapurasteelpipe.com

**Website :** www.ashapurasteel.com / www.ashapurasteelpipe.com